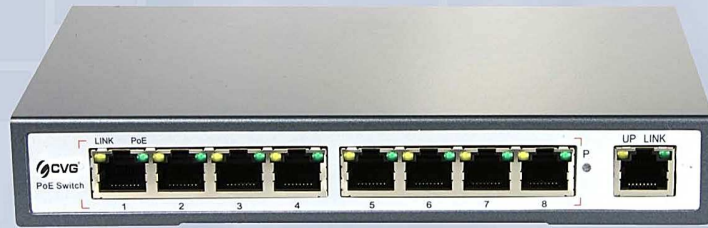


Orange

Smart Technology  
For Security ...



CV-5008EP-E

8 Port PoE Switch  
1 Uplink Port: 10/ 100Mbps  
VLAN Enhanced security



Model		CV-5008EP-E
<b>Power Supply</b>	Power Supply Mode	Power Adaptor
	Voltage Range	DC48~56V
	Power Consumption	The device <5W, PoE power supply <120W
<b>Network Port Parameter</b>	Network Ports	1~8 Ethernet Port : 10/100Mbps
		1 Uplink Port : 10/100 Mbps
	Transmission Distance	1~8 Ethernet Port : 0~250m
		1 Uplink Port : 0~100m
	Transmission Media	1~8 Ethernet Port : Cat5e/6 standard UTP cable.
		Uplink Port : Cat5e/6 standard UTP cable
	PoE Agreement	IEEE802.3 af/at standards
PoE Power Supply Mode	End-span method	
PoE Power Supply Wattage	Each port≤30W,Whole device<120W	
<b>Network Switch Specification</b>	Network Standard	IEEE 802.3/802.3u
	Swap Mode	Store-and- forward
	Data-Caching Mechanism	512K
	MAC Address List	1K
<b>Status Indicators</b>	Power Indicator Light	One power light (red)
	Optical Fiber Port Indicator	One fiber link indication light ( green), Green light keeps on when the fiber port is well connected; Blinking when transceiver data
	FE Uplink Port	LED (Green): On, port is link on Off, port is link down;LED(Yellow):on when link speed is 100M Off when link speed is 10M Blink when transceiver data
	PoE Indicator	8 PoE indicator light (yellow)
	PoE Network Port LED	1~8 port ( green light on RJ45 jack) Keeps on when normally connected, Blinking when transceiver data
	Reset Indicator	1 restart indication light (green), light on when press the button
	Vlan Indicator	One green indication light
<b>Button/Switch</b>	Reset Button	One button. Whole machine will restart while press the button.
	Vlan Switch	One, slide switch to "ON" + press restart button, Vlan function opens
<b>Protection Level</b>	Surge Immunity	Level 3, executive standard : IEC61000-4-5
	Electrostatic Protection	1a touch electric discharge: level 3
		1a Air discharge: level 3 Executive standard : IEC61000-4-2
<b>Operating Environment</b>	Working Temperature	0°C~55°C
	Storage Temperature	-40°C~70°C
	Humidity(non-congeal)	0~95%
<b>Mechanical Attributes</b>	Dimensions (L*W*H)	219.6mmx105.0mmx27.6mm
	Color	Black
	Weight	612g
<b>Reliability</b>	Mean time between failures (MTBF)	> 50000h